

# BARRINGTON CLOSE & FAIRFORD CLOSE EXHIBITION OCTOBER 2023

## House/Flat Types

The new homes have been designed to respond to the slope of the site and a large number of the houses are split-level.

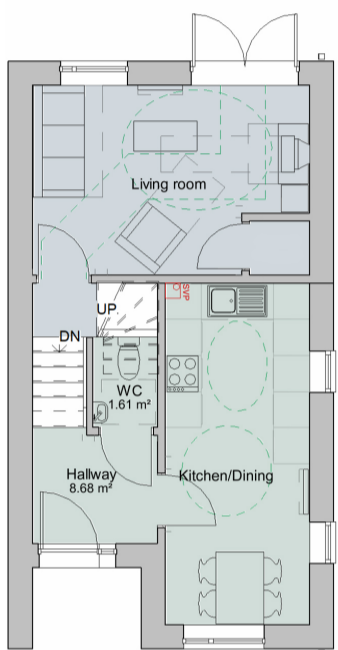
All houses have been designed to meet Building Regulations and the Nationally Described Space Standards.

Proposed materials have been drawn from local building examples and include:

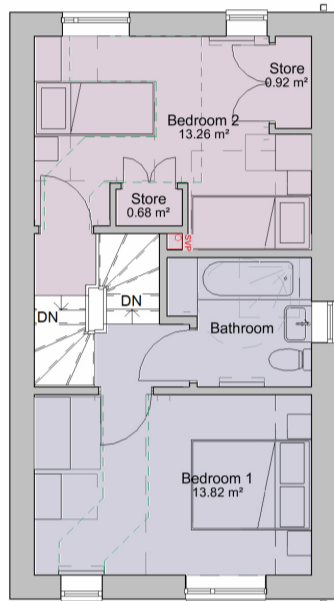
- Plain tile roof finish
- Red multi brick external walls and boundary walls
- Off-grey brick external walls to some areas
- Coloured doors, windows, fascia boards and rainwater goods
- Railings to garden areas

House types will include:

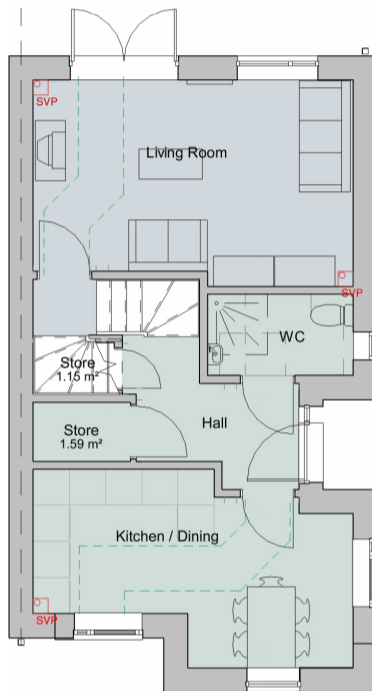
- 1 Bed 2 Person Flat
- 1 Bed Coach House
- 2 Bed 4 Person Maisonette
- 2 Bed 4 Person House
- 2 Bed 4 Person Stepped House
- 3 Bed 5 Person House
- 3 Bed 5 Person Stepped House
- 4 Bed 6 Person House



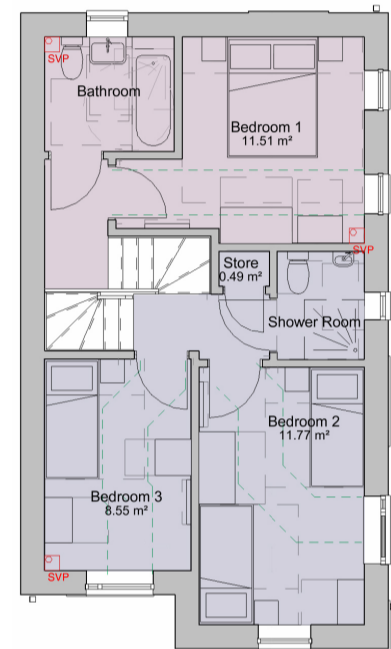
Ground Floor  
Sample of a 2 Bed Step Type



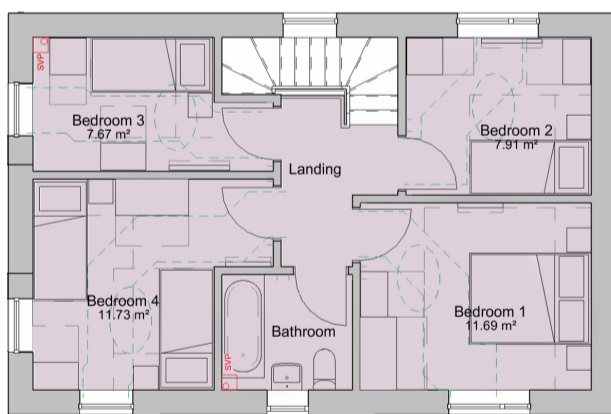
First Floor



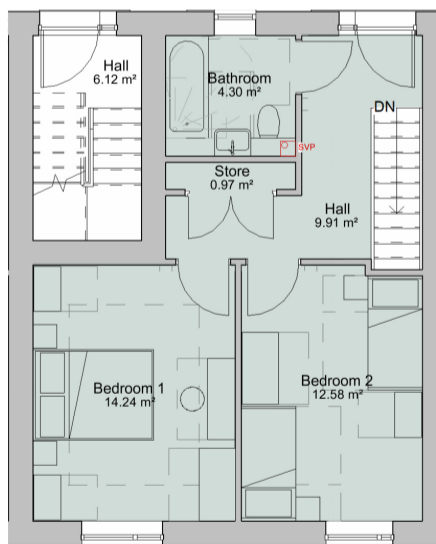
Ground Floor  
Sample of a 3 Bed Step Type



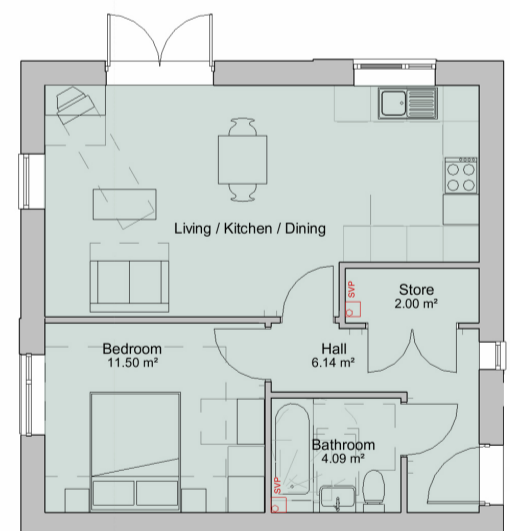
First Floor



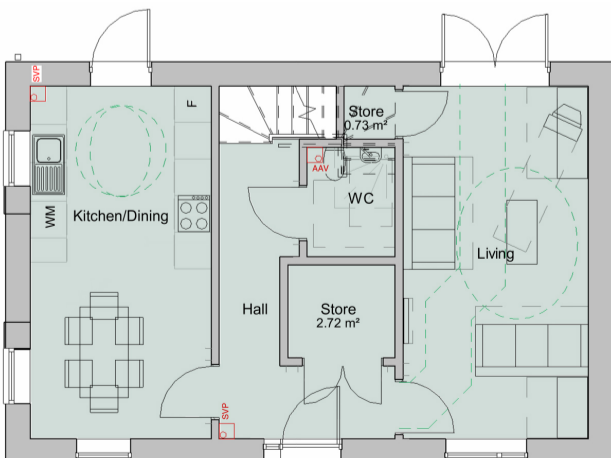
First Floor



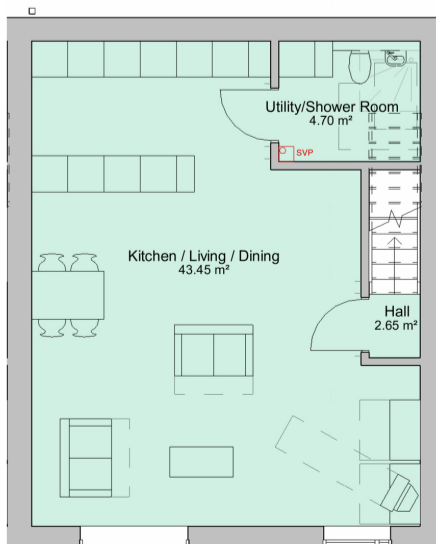
Ground Floor



Ground Floor  
Sample of a 1 Bed Flat



Ground Floor  
Sample of a 4 Bed House



Sample of a 2 Bed Maisonette

### KEY

- Ground Level
- Stepped Up Ground Level
- Lower Ground Level
- First Floor
- Stepped Up First Floor