

# User Guide

## New Asbestos Web Portal

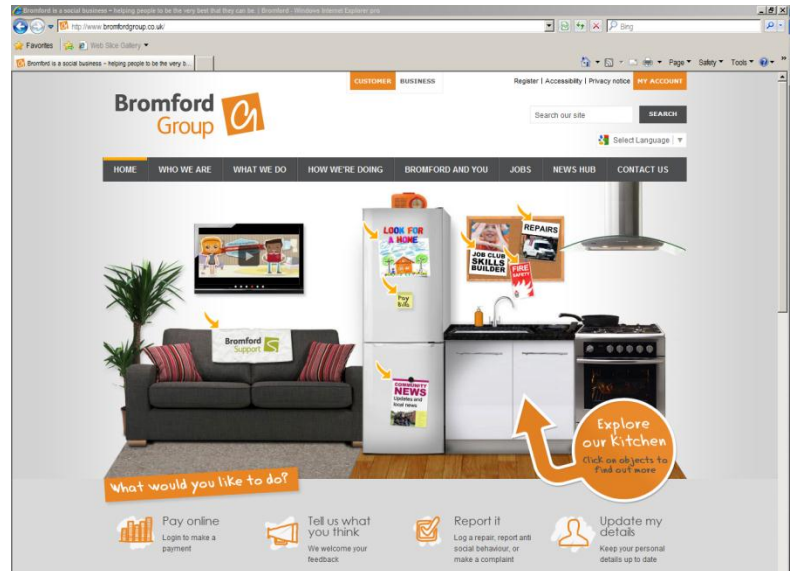


### 1. Bromford Group Website

Open Windows Internet Explorer.

Enter web address:

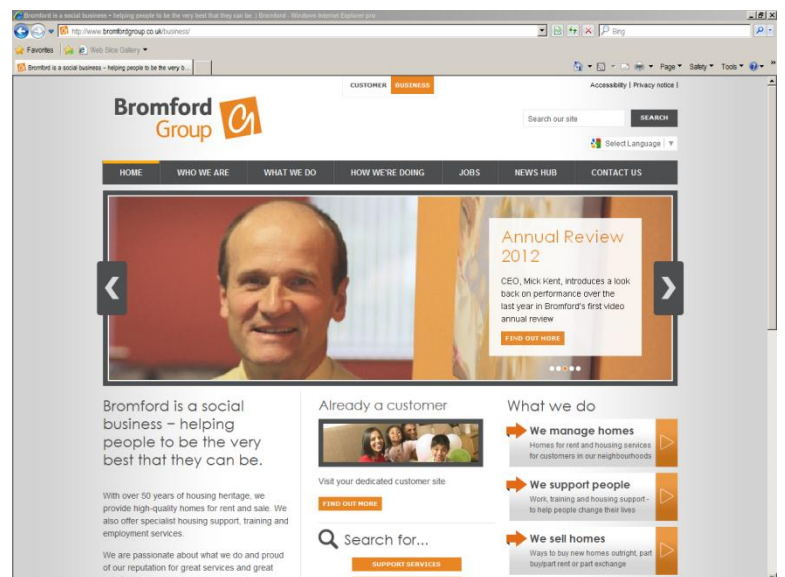
<http://www.bromfordgroup.co.uk/>



### 2. Business

Select 'link' to **Business**

<http://www.bromfordgroup.co.uk/business/>

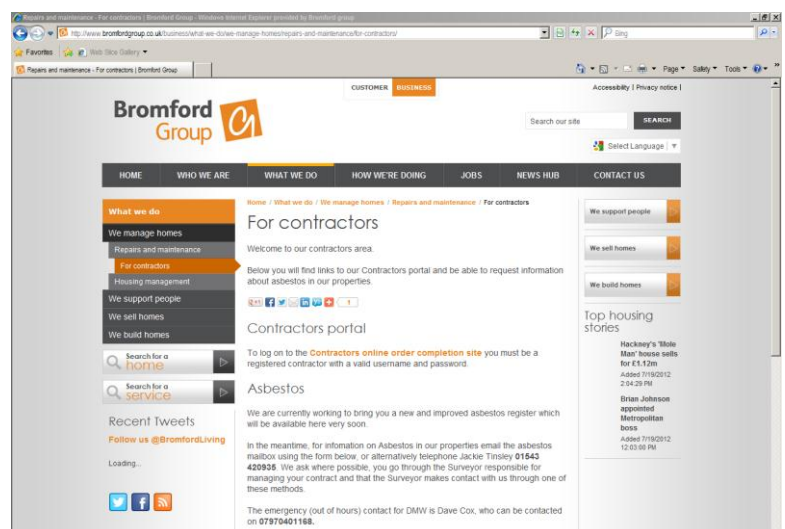


### 3. Contractors

Select 'link' **For Contractors**

*Tip: Located on footer of web page*

<http://www.bromfordgroup.co.uk/business/what-we-do/we-manage-homes/repairs-and-maintenance/for-contractors/>



Select 'link' to **new Asbestos Register**

user guide: new asbestos web portal

## 4. Asbestos Register

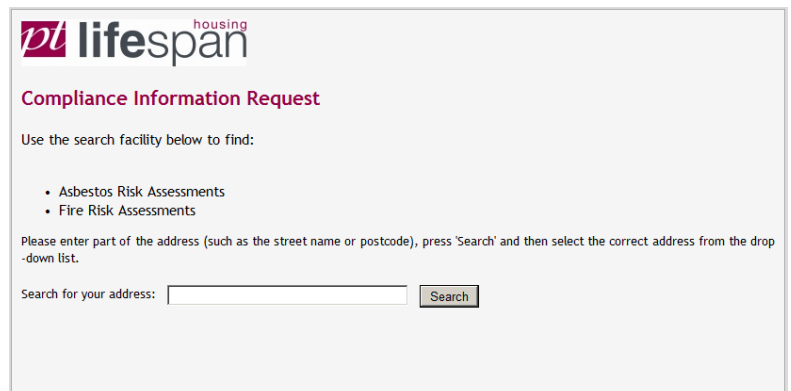
The asbestos register is hosted by our partner Property Tectonics, via their commercial web portal.

Enter your username and password into the customer login.



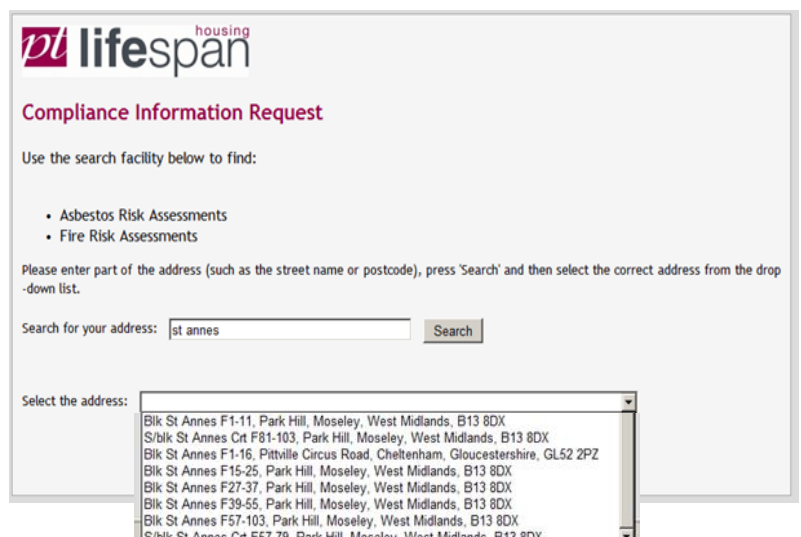
## 5. Search Facility

The facility will allow for full or partial addresses, postcodes and UPRN [Asset reference number] searches.



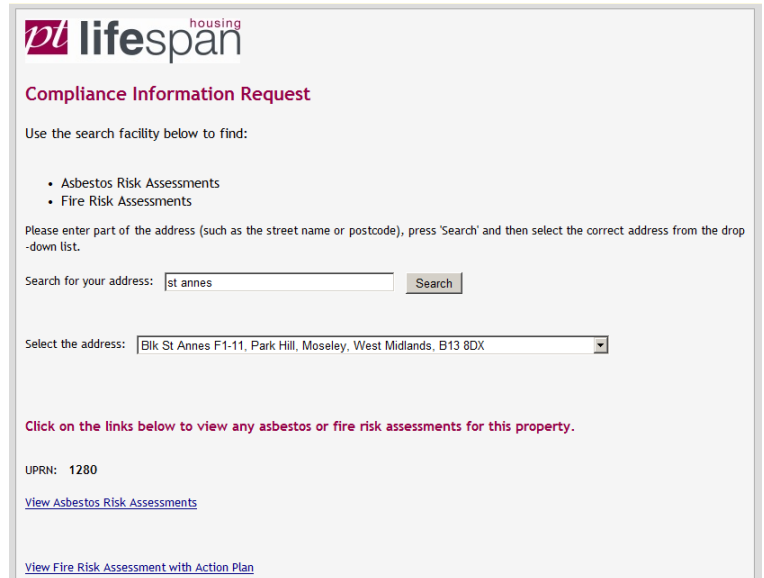
## 6. Search Results

Any matching search results will be listed in the drop down dialogue box, select the relevant address, to view whether there are any assessments for this property?



## 7. Asbestos Risk Assessments

Click on the link to open any asbestos risk assessment?



**pt lifespan** housing

**Compliance Information Request**

Use the search facility below to find:

- Asbestos Risk Assessments
- Fire Risk Assessments

Please enter part of the address (such as the street name or postcode), press 'Search' and then select the correct address from the drop-down list.

Search for your address:

Select the address:

Click on the links below to view any asbestos or fire risk assessments for this property.

UPRN: 1280

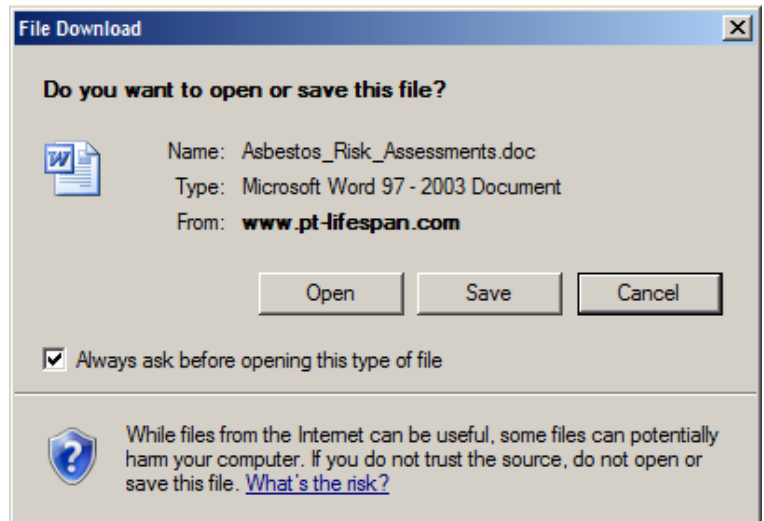
[View Asbestos Risk Assessments](#)

[View Fire Risk Assessment with Action Plan](#)

## 8. Assessment File Download

The assessment will then 'download' as a Word Document, for you to either open or save locally.


**Note:**  
If you don't have Microsoft Word or another compatible document application installed. You can download a free Word Viewer from the Microsoft Download Centre.



NB: Should you have any technical difficulties accessing the asbestos register, please email the asbestos mailbox <[asbestos@bromford.co.uk](mailto:asbestos@bromford.co.uk)> stating your company name and issue.

## 9. Sample Asbestos Risk Assessment

### Asbestos Risk Assessment



---


UPRN: 1280

Blk St Annes F1-11, Park Hill, Moseley, West Midlands, B13 8DX

---

**Sample Details**

Survey Type: Management  
 Sample Type: Sampled  
 Sample ID: BB16251/01  
 Lab Results: Positive  
 Location 1: Main : 0 - Ground Floor : External  
 Location 2: Canopy board above bin cupboards  
 Element Type: Board  
 Action Required: Manage and label  
 Assessment Date: 23/12/2009  
 Consultant Name: DMW Environmental Safety Ltd  
 Surveyor Name: Mark Reed  
 Action Taken: Re-inspected  
 Last Review Date: 23/12/2009  
 Next Review Date: 23/06/2010



---

Material Assessment		Score	Priority	Score
Product Type:	Asbestos Insulating board	2		0
Condition:	Low damage	1		0
Surface Treatment:	Enclosed Sprays			0
Asbestos Type:	Amosite (Brown)		Probable or unlikely to	0
Material Assessment Score:				0
	Counts or Items (eg Gaskets)			0
	stone			0
	Infrequent			0
	Less than 1 hour			0
<b>Risk Assessment</b>				
Risk Assessment Score:	Minor Disturbance			0
Risk Factor:	Maintenance: ACM Unlikely to be Disturbed			0
	Assessment Score:			0

---

**Cost Details**

Licensed Work:  
 UOM:  
 Quantity:  
 Unit Cost Min:  
 Total Cost Min:

---

**Comments**

Priority Action Rating: 1

Material Comments:  
 The material was seen to be in good condition at the time of the initial inspection.

Material Recommendations:  
 The condition of the material should be monitored by a competent person/company and its presence made aware to those at risk, as part of a Control of Asbestos Regulations (CAR) 2006 compliant management strategy.

Refer also to Site Synopsis for additional information.

---

**Events**

---

Page 3 of 5

user guide: new asbestos web portal