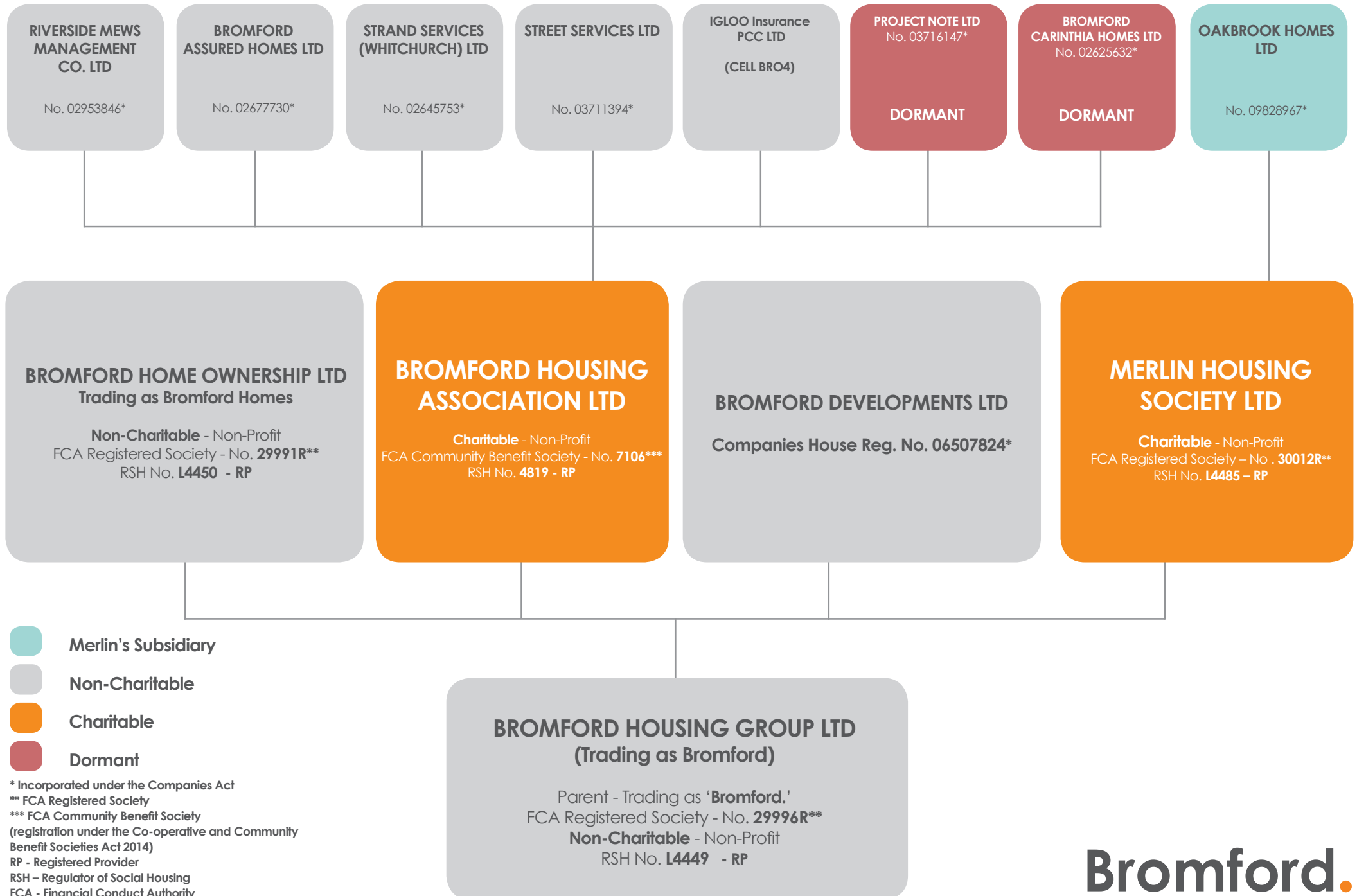


Bromford Group Structure



- Merlin's Subsidiary
- Non-Charitable
- Charitable
- Dormant

* Incorporated under the Companies Act
 ** FCA Registered Society
 *** FCA Community Benefit Society
 (registration under the Co-operative and Community Benefit Societies Act 2014)
 RP - Registered Provider
 RSH - Regulator of Social Housing
 FCA - Financial Conduct Authority